



**RDSRF-xxx-T9FZ Configuration Utility  
User Manual  
Rev 1.0**



**Reindeer Systems Pvt Ltd**

*Excellence Through Innovation*

B-1, "SHOBA", #26  
10<sup>th</sup> Avenue, Ashok Nagar,  
Chennai – 600083  
India.



## Document Revision History

Revision No.	Date	Description/Changes
V1.0	18/6/2008	Initial Release



## Table of Contents

<b>1 OVERVIEW .....</b>	<b>4</b>
<b>2 INSTALLATION INSTRUCTIONS .....</b>	<b>5</b>
<b>3 MINIMUM SYSTEM REQUIREMENTS.....</b>	<b>5</b>
<b>4 DEVICE SETTINGS .....</b>	<b>6</b>
<b>4.1 SERIAL PORT SETTINGS.....</b>	<b>6</b>
<b>4.2 RF Settings .....</b>	<b>7</b>
<b>4.3 System Identification.....</b>	<b>8</b>
<b>4.4 PC settings .....</b>	<b>8</b>
<b>5 WRITE TO DEVICE .....</b>	<b>8</b>
<b>6 READ FROM DEVICE .....</b>	<b>9</b>
<b>7 MENUS .....</b>	<b>9</b>
<b>8 USAGE GUIDE .....</b>	<b>11</b>
<b>9 CONTACT US.....</b>	<b>12</b>
<b>9.1 TECHNICAL SUPPORT.....</b>	<b>12</b>
<b>9.2 Sales Support.....</b>	<b>12</b>



## 1 Overview

The RDSRF-xxx-T9FZ Configuration Utility software can be used to configure the settings of the following products

- 1) RDSRF-232-T9FZ-UC
- 2) RDSRF-422-T9FZ-UC
- 3) RDSRF-485-T9FZ-UC

It comes with an easy to use interface, through which the user can configure the serial port settings and the Radio settings.

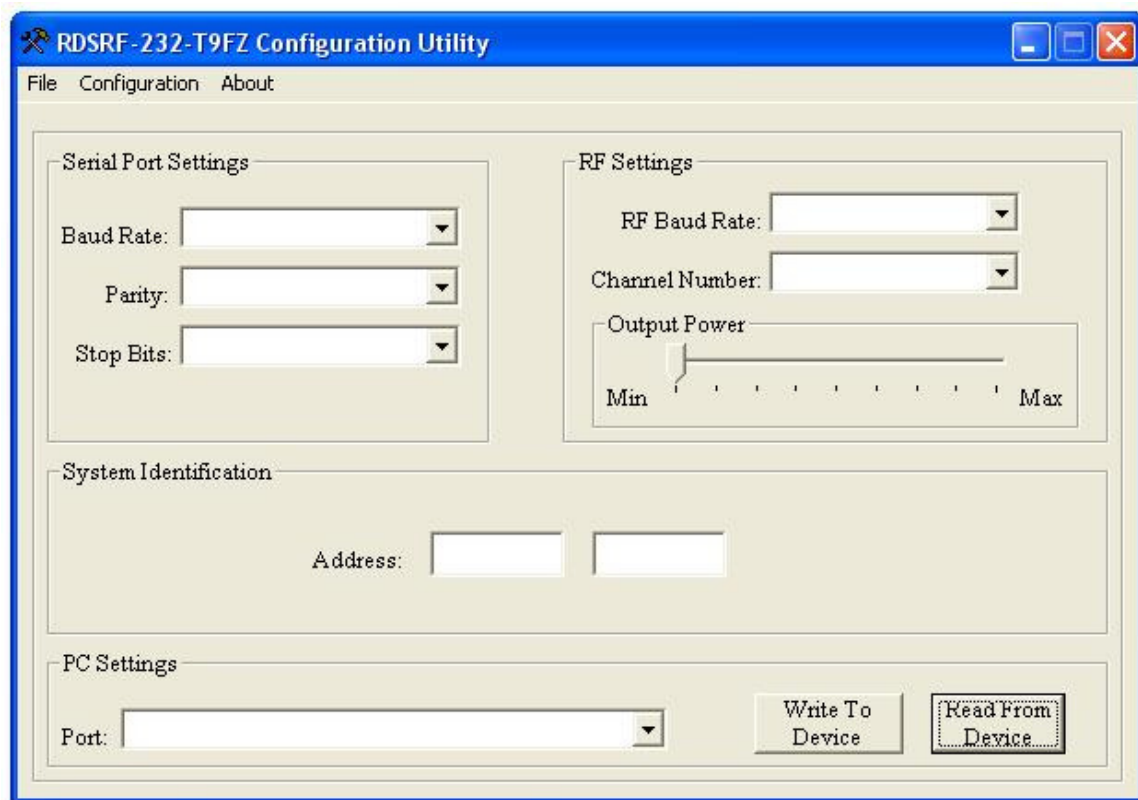


Figure1: RDSRF-xxx-T9FZ Configuration Utility Screenshot



## 2 Installation Instructions

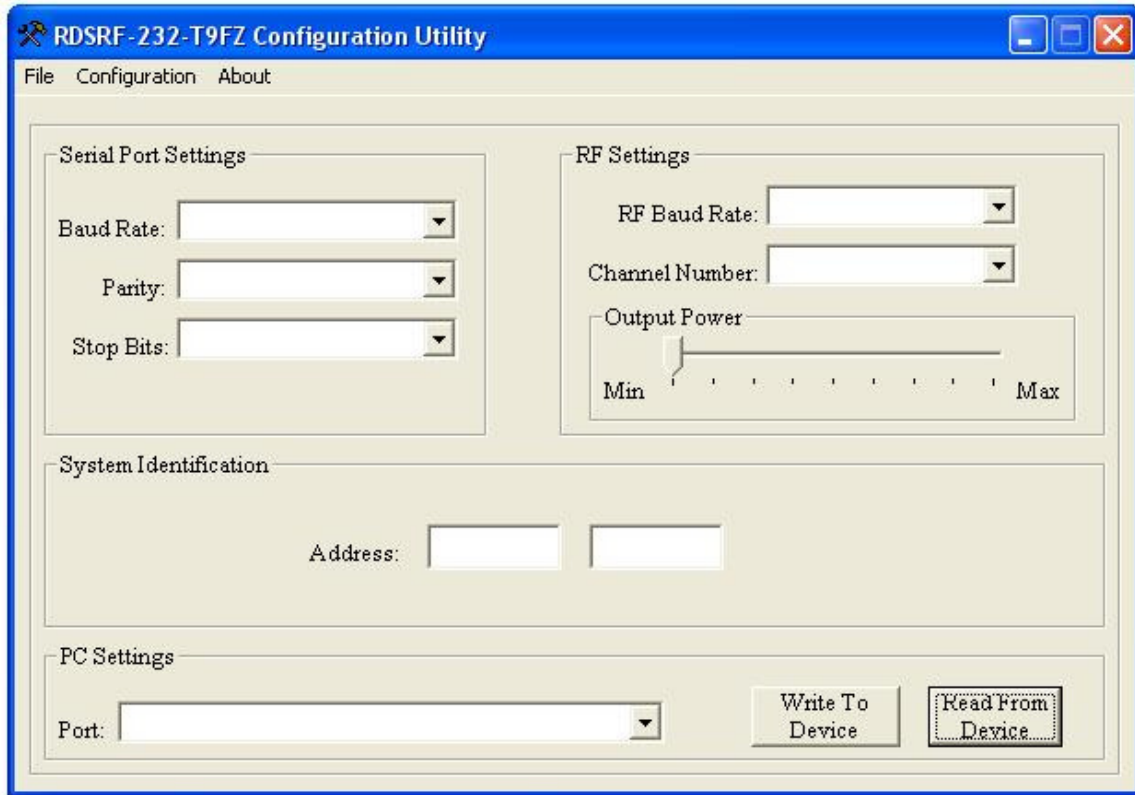
- Turn on your computer
- Insert the software CD into your CD-ROM drive.
- Open My Computer and double click on the CD-ROM icon to open its contents.
- Launch the Setup.exe file
- Follow the on-screen instructions for completing the setup.
- Once the installation is complete the software can be run from the Start menu.

## 3 Minimum System Requirements

- 400 MHz Pentium® II processor or AMD-K6® class processor
- 64 MB of RAM
- CD-ROM
- 9-pin Serial Port
- Microsoft® Windows® XP Service pack 2



## 4 Device Settings



### 4.1 Serial Port Settings

Using these settings the user can change the serial port settings of the boards according to his need. The following settings are available.

Baud Rate : 1200, 2400, 4800, 9600, 19200, 57600, 115200 bps.

Parity : Even, Odd, None.

Stop Bits : 1, 2.



## 4.2 RF Settings

Using these settings the user can change the behavior of the Radio.

RF baud rate:

The RF baud rate can be set to any one of the following

- 1) 1200 bps
- 2) 2400 bps
- 3) 4800 bps
- 4) 10000 bps
- 5) 38400 bps
- 6) 76800 bps
- 7) 100000 bps
- 8) 250000 bps

It must be noted that lower baud rate gives longer range of communication but time taken for sending data will be more. But if higher baud rate is selected the data transmission time will be short but the distance of communication will come down.

Channel Number:

The user can select any channel for communication from 1 to 18. The channel numbers and their corresponding frequencies are given below

Channel 1 – 915 MHz

Channel 2 -- 915 MHz + 199 KHz

Similarly all the channels are 199 KHz apart from the previous channel.

Output power:

These settings can be used to vary the power output from the device. The min setting yields -30dBm output power whereas the max setting gives +10dBm output power.

Higher the output power higher will be the range of communication and vice-versa.



### 4.3 System Identification

The user can use these settings to change the address of the device. The address is a 16 bit address. The User can set any number from 0 to 255 in each window. Note that only those devices with the same address can communicate with each other.

### 4.4 PC settings

Port:

The user can select the COM port which is used to connect the PC to the device for programming the user settings.

Write to device:

This button is used for downloading the user specified setting into the device. Detailed explanation can be found below.

Read from device:

This button is used for reading the settings that has been previously programmed into the device. Detailed explanation can be found below.

## 5 Write to Device

This button is used for downloading the user defined settings into the device. If any invalid setting is found upon pressing this button an error message will pop-up. Or else if all the settings are valid a progress bar will pop-up indicating the download status. If the download is completed successfully, a *“Programming Successful”* message will appear on the screen. But if the download is not completed successfully the following message is shown *“Programming not successful. Please reset the device and try again.”* While the settings are being downloaded the Green LED on the device will be ON and will turn OFF after download.



## 6 Read from Device

This button is used to read back the settings that have been previously programmed into the device. If the device is not connected while pressing this button the following message appears on the screen *“Device not found, Reset the device and try again.”* If the device is connected a progress bar will appear on the screen indicating the read back status. After successfully reading from the device all the settings are loaded into their corresponding locations.

## 7 Menus

There are three menus available in the software which has been explained below.

- 1) File
- 2) Configuration
- 3) Help

### 1) File

This menu has only one sub-menu named “EXIT”. The exit menu button can be used to close the application.

### 2) Configuration

Under this menu there are three sub menus

#### a) Load Defaults

The user can use this option to load the default settings. The default settings are as follows.

#### Serial device settings

Baud rate - 9600 bps  
Parity - None  
Stop Bits - 1

#### RF settings

Baud Rate - 2400 bps  
Channel - 1  
Output power - Max



System Identification

Broadcast/one to one mode

Address - 114 71

PC settings

Port - COM1

b) Load Configuration

This option can be used to load any previously saved configuration files. The configuration file format will be “.ini”. If a wrong ini file is selected an error message will pop-up indicating that the file is invalid.

c) Save Configuration

This option can be used to save the user defined settings, which can be loaded again if necessary. The configuration file will be saved in “.ini” format. The user can specify any name for the configuration file.

3) Help

Under this menu the user can find the User guide and the about button.



## 8 Usage guide

- Change the device to user program mode (More details on changing the mode can be found in the device datasheet).
- Plug in the serial cable, one end to the device and the other to the PC COM port.
- Power up the device. At power up both the LED's will blink.
- Now run the application on the PC.
- Select the required settings and press the "Write to device" button.
- The green LED will turn ON while the settings are being downloaded into the device. The LED will turn OFF after download. And a program successful message will appear on the screen.
- After successful download, power OFF the device, then change the mode of the device to normal mode and power it ON. Now the device is ready to operate according to the settings that have been downloaded.
- Alternatively if the user wishes to read the settings from the device just select the COM port and press the "Read from Device" button. All the previously programmed setting for that device will be loaded into their corresponding locations. While the read back is in progress the Red LED in the device will turn ON and after the read back process is completed it will turn OFF.



## **9 Contact Us**

### **9.1 Technical Support**

Reindeer Systems Pvt Ltd has built a solid technical support infrastructure so that you can get answers to your questions when you need them.

Our technical support engineers are available Mon-Fri between 9:30 am and 6:00 pm Indian standard time. The best way to reach a technical support engineer is to send an email to [support@reindeersystems.com](mailto:support@reindeersystems.com). E-mail support requests are given priority because we can handle them more efficiently than phone support requests.

### **9.2 Sales Support**

Our sales department can be reached via e-mail at [sales@reindeersystems.com](mailto:sales@reindeersystems.com) or by phone at 91-44-45022335/337.

Our sales department is available Mon-Fri between 9:30 am and 6:00 pm.



**Reindeer Systems Pvt Ltd**

*Excellence Through Innovation*

B-1, "SHOBA", #26  
10<sup>th</sup> Avenue, Ashok Nagar,  
Chennai – 600083  
India.

Phone: 91-44-45022335, 91-44-45022337

Fax: 91-44-45022336

Website: [www.reindeersystems.com](http://www.reindeersystems.com)